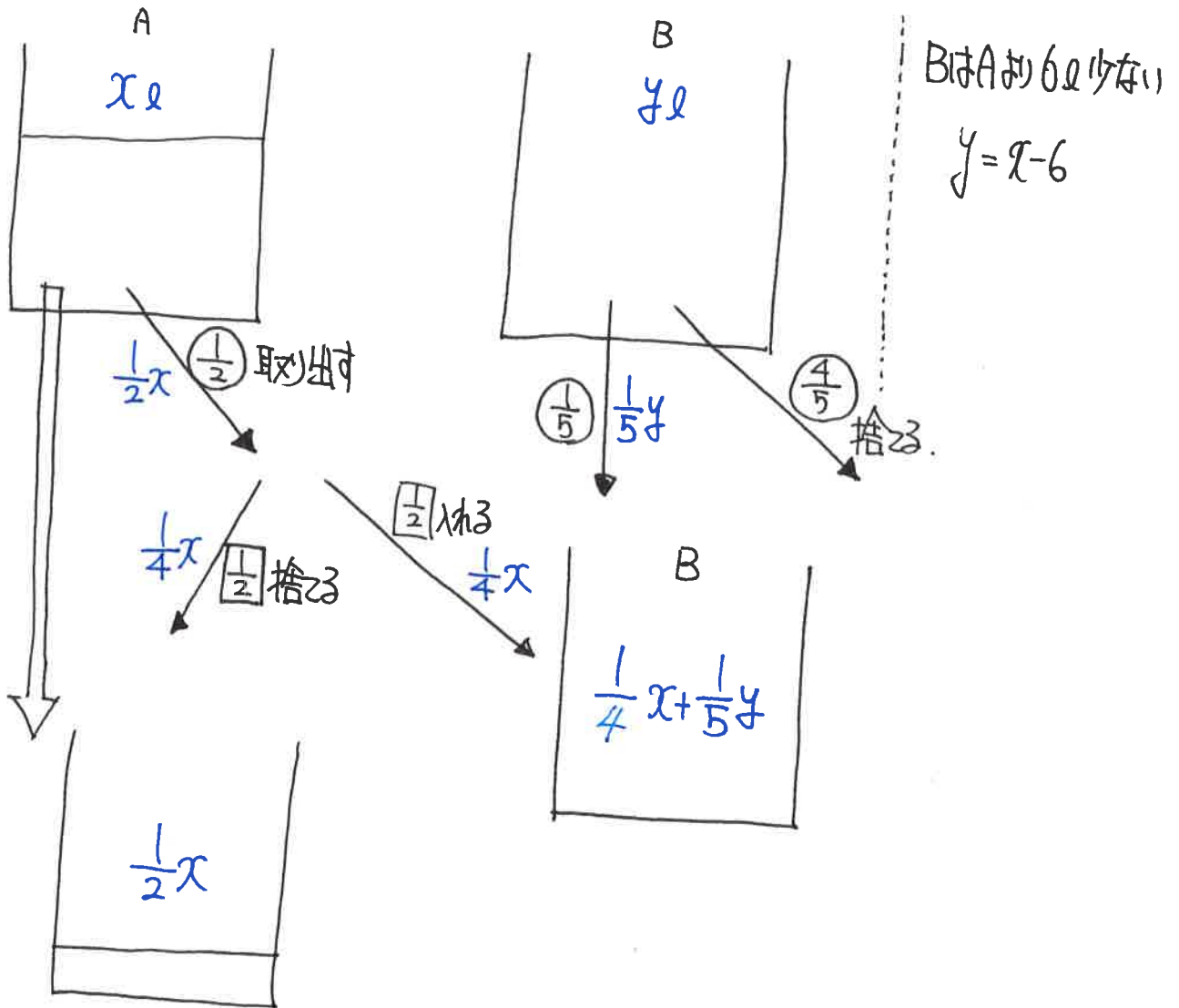
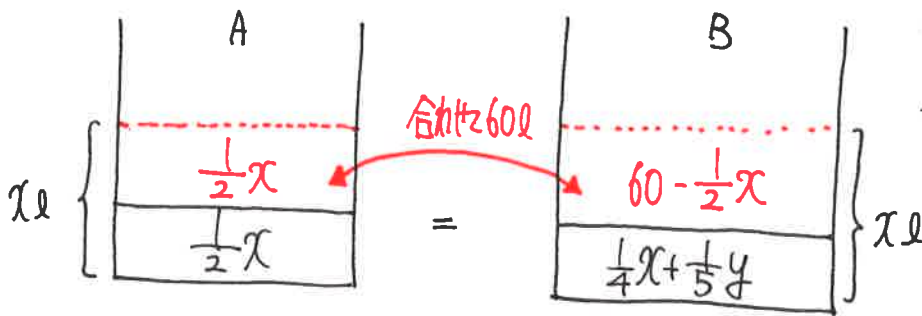


8.



60LをAに入れた最初のAの $xL$ と等しい



$(60 - \frac{1}{2}x) + (\frac{1}{4}x + \frac{1}{5}y) = x$

よって

$$\begin{cases} y = x - 6 \\ (60 - \frac{1}{2}x) + (\frac{1}{4}x + \frac{1}{5}y) = x \end{cases}$$
 の連立方程式を解く

$$-\frac{1}{2}x + \frac{1}{4}x + \frac{1}{5}x - x = -60 + \frac{6}{5}$$

$$-2|x = -1176$$

$$x = 56$$

$$y = 50$$

A. (A) 56L (B) 50L